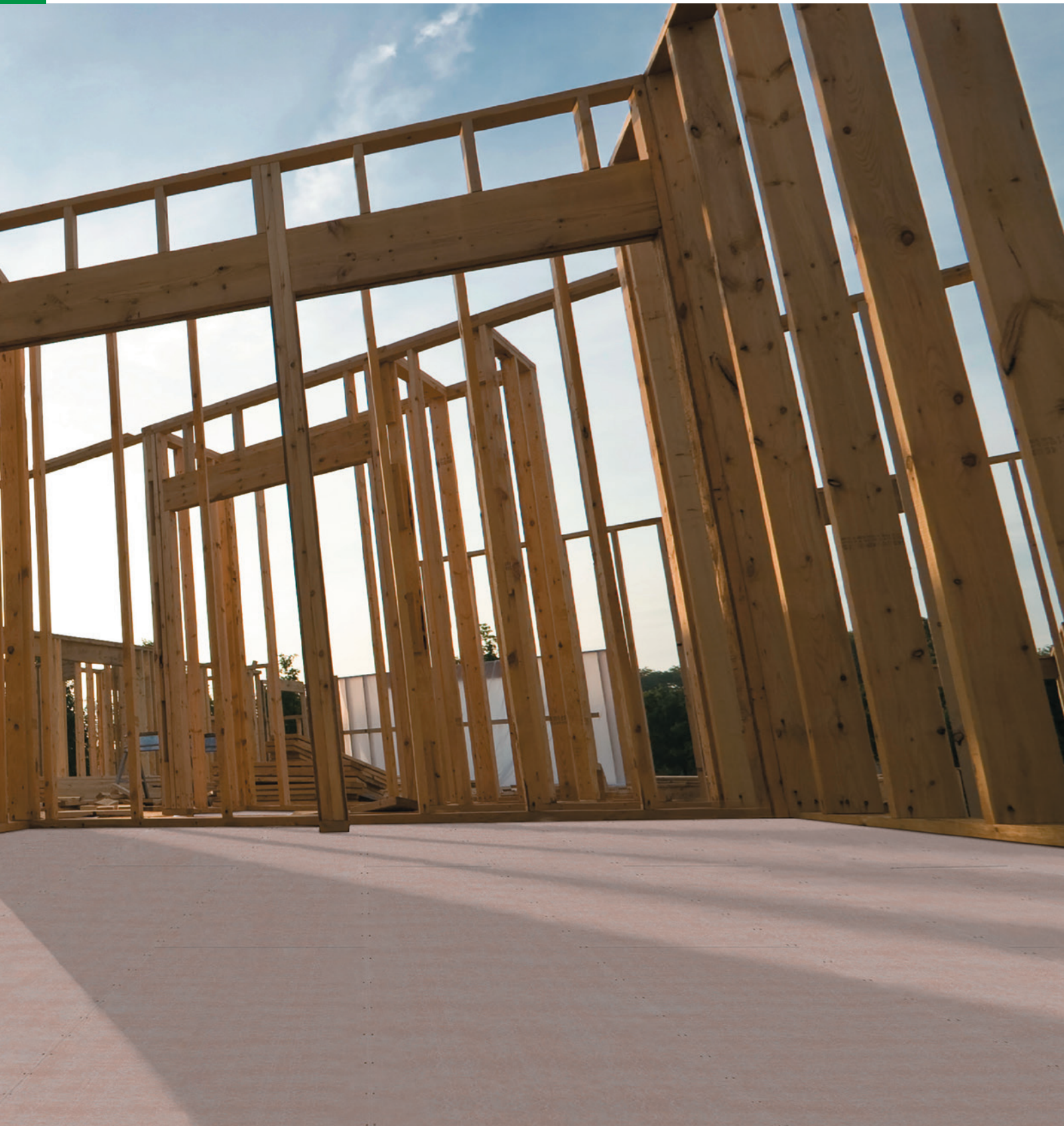


---

# Secura™ Flooring





# Secura™ Flooring

## HIGH PERFORMANCE WITH PEACE OF MIND

Secura™ Flooring is a high performance structural floor, offering the robust feel of a concrete floor with the speed of timber floor installation. It is engineered to address the complete range of performance needs for residential and light commercial floors. Secura™ Flooring offers indoor comfort, quiet, solid floors and lasting peace of mind.

When installed in accordance with its installation manual Secura™ Flooring does not expand or contract from moisture or thermal movement making it the ideal substrate for tiling or most floor finishes.

It's made from 19mm thick fibre cement, giving you a stable and solid squeak free floor. Use as an interior flooring substrate under tile, vinyl or carpet over timber or steel floor joists in both wet and dry areas.

# What is fibre cement?

Engineered for durability, fibre cement is resistant to fire, rot resistant and resistant to moisture damage, making it an ideal low maintenance building material. Fibre cement offers both contemporary and flexible design options and is used by many New Zealanders to create stunning homes.

The basic composition of Hardie™ fibre cement building products is Portland cement, ground sand, cellulose fibre, water and proprietary additives, which give the product its strength to stand the test of time.

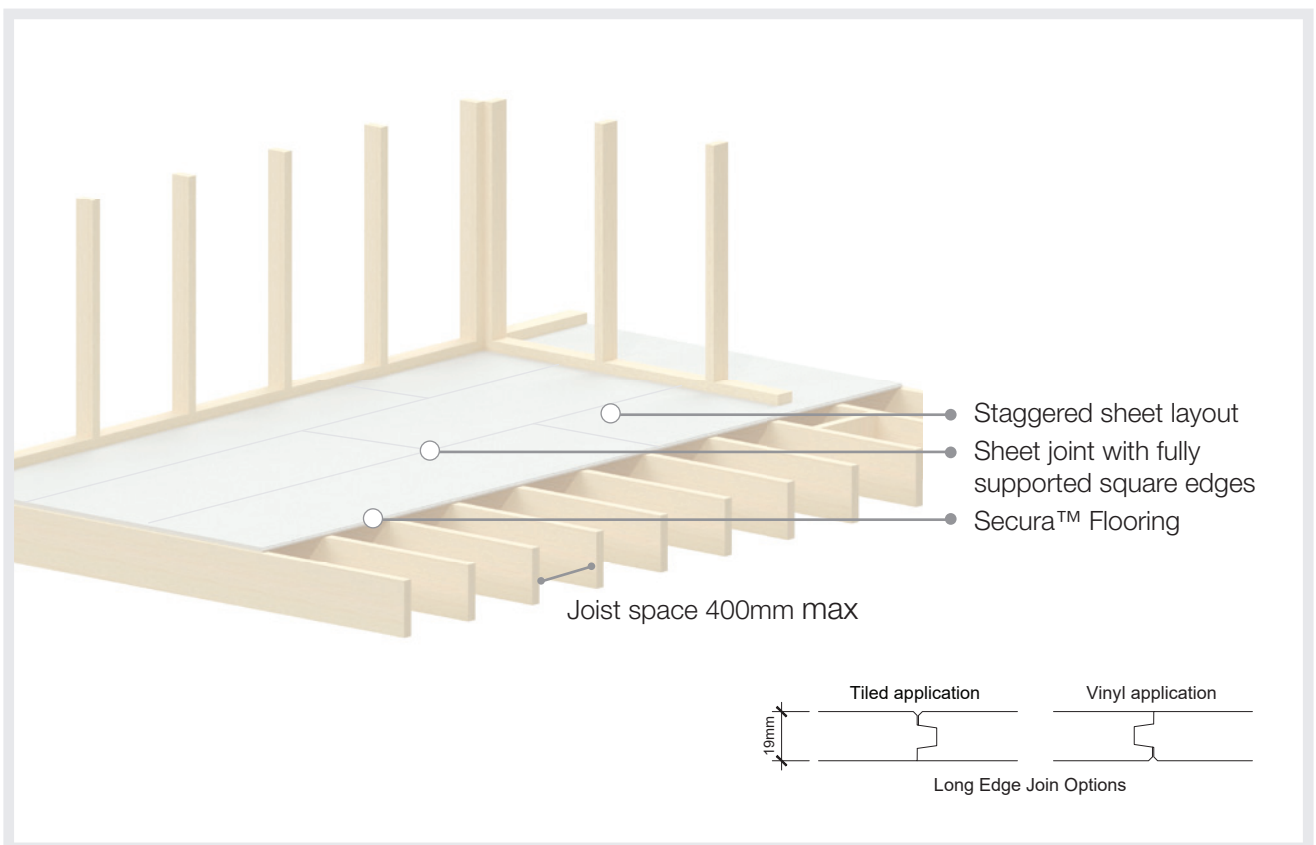


Global GreenTag™ GreenRate™ Level A and Product Health Declaration™ PHD Platinum Health mean our products have passed the world's toughest standards for health, eco performance and safety.

# Applications

Secura™ Flooring is suitable for use in residential and commercial building flooring applications. The 19mm thickness makes it suitable for butt jointing on site with other flooring materials on the market. The inherent moisture resistant properties of Secura™ Flooring makes it a robust flooring material for use in wet or dry area applications. Tiles and heavy grade vinyl linings can be directly fixed to this substrate without the need for an underlay sheet.

## TILE, VINYL & CARPET APPLICATION



### SHEET SIZE

LENGTH (mm)

WIDTH (mm)

THICKNESS (mm)

2400

600

19

### PRODUCT SKU

405574

# Fire & Acoustic Flooring System

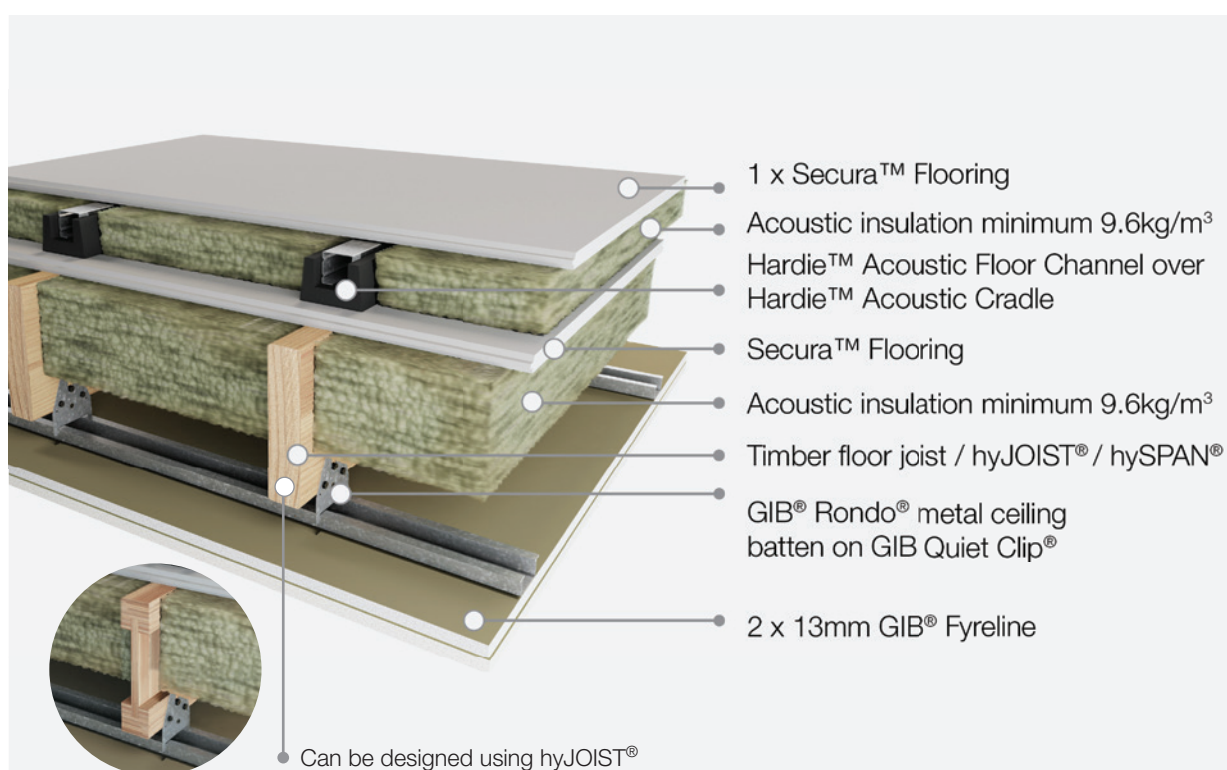
Secura™ Fire & Acoustic Floor Systems are a mid-floor solution, engineered to address the complete range of fire and acoustic performance needs in a multi-storey, intertenancy floor dwelling. The system delivers high value acoustic performance in multilevel residential and commercial buildings above code requirements in both Sound Transmission Class (STC) and Impact Insulation Class (IIC).

## DESIGN VERSATILITY

- Services can be run through the cavity without compromising the fire rating
- Acoustic performance achieved with no reliance on carpet or acoustic underlay to meet NZBC requirements
- Up to 60 minute fire resistance rating (FRR) can be achieved when installed as per the Fire and Acoustic Design Manual by James Hardie
- Can be used as an intertenancy lightweight and concrete floor system

## INTERTENANCY LIGHTWEIGHT FLOOR SYSTEM

The James Hardie Fire & Acoustic floor system\* can be used in conjunction with solid timber floor joists and hyJOIST®/ hySPAN® joists to achieve a FRR of 60/60/60, STC – 67 and IIC – 57 acoustic performance exceeding the minimum requirements of the NZBC.



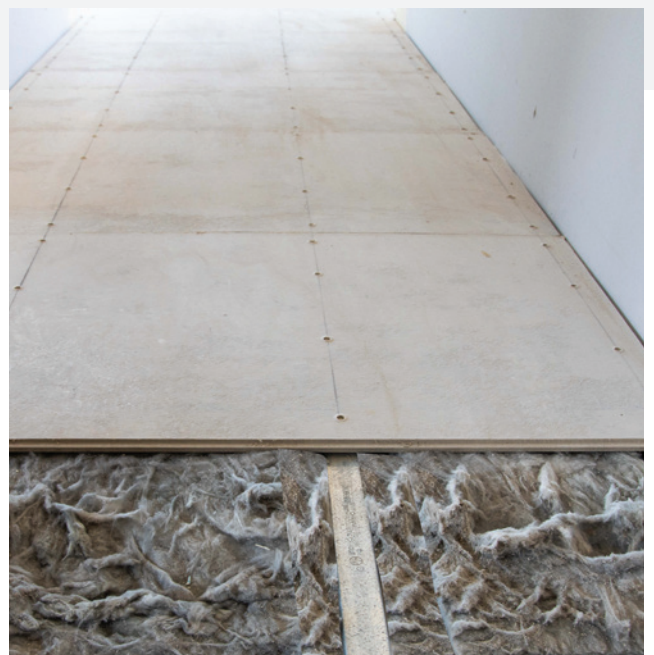
# Concrete Flooring System

The James Hardie Fire & Acoustic floor system\* can be used in a concrete floor base to deliver superior acoustic and insulation performance of STC – 70 and IIC - 58.



Please refer to the Secura™ Flooring Fire & Acoustic Floor System Installation Manual for full installation instructions.

\*The IIC ratings for the intertenancy lightweight and concrete floor systems published have been calculated without any floor covering over the Secura™ Flooring. The products specified in these systems must be installed in accordance with their manufacturing specifications.





# Features & Benefits



## TILE DIRECT

Can be tiled directly without the need for underlay, avoiding noticeable height differences from one floor finish to the next



## RESISTANT TO DAMAGE FROM MOISTURE



## FIRE RESISTANT

Up to 60 minute fire resistance rating (FRR) can be achieved when installed as per the Fire and Acoustic Design Manual by James Hardie



## SOUND TRANSMISSION

The intertenancy lightweight flooring system achieves a sound transmission class (STC) of 67



## COMPLIANCE

BRANZ Appraised and CodeMark Certified



## 25 YEAR PRODUCT WARRANTY



## 90 DAY EXPOSURE

Can be exposed for up to 90 days during construction



## EASY TO INSTALL

The tongue and groove joint removes the requirement for blocking, speeding up the install process



## ACOUSTIC PERFORMANCE

The fire and acoustic flooring system achieves acoustic performance with no reliance on carpet or acoustic underlay



[jameshardie.co.nz](http://jameshardie.co.nz)



For more information, warnings and warranties please see our website and review the relevant installation and technical guides. James Hardie Durability. When installed and maintained correctly in accordance with James Hardie's literature, current at the time of installation, James Hardie products are resistant to fire, rot resistant and resistant to moisture damage. ©2025 James Hardie New Zealand Limited 0800 808 868. ™ and ® denotes a trademark and registered mark owned by James Hardie Technology Ltd.